

## Entrematic PID24

Microwave non-contact pushbutton

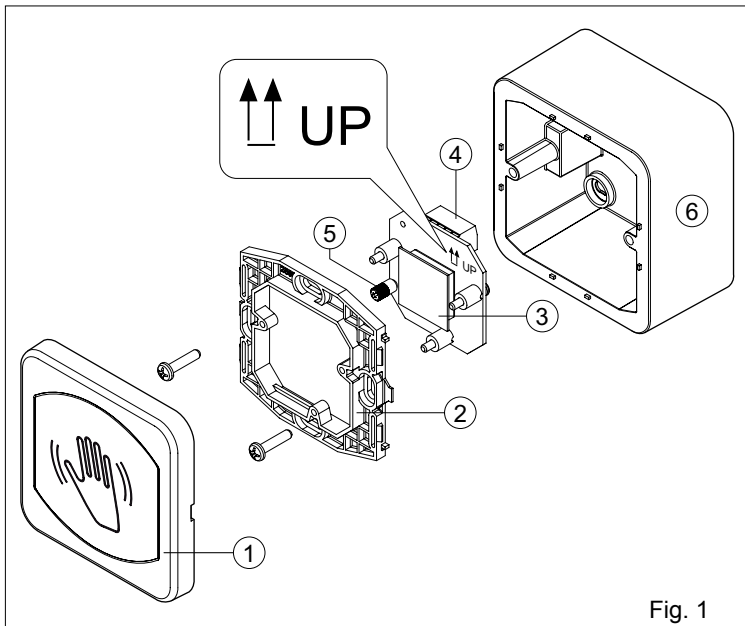


Fig. 1

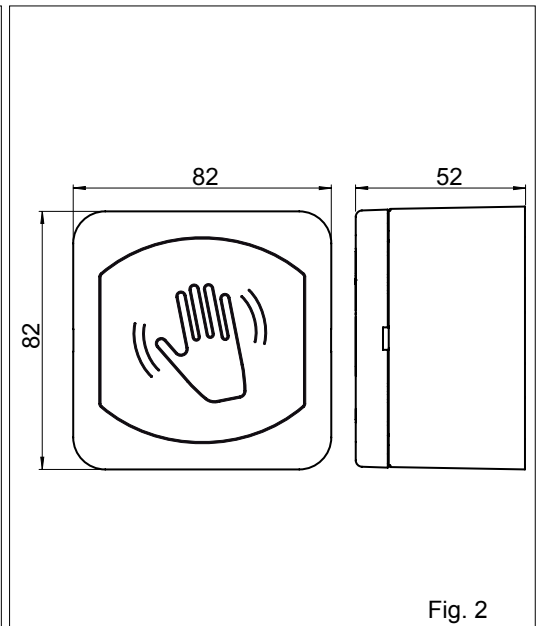


Fig. 2

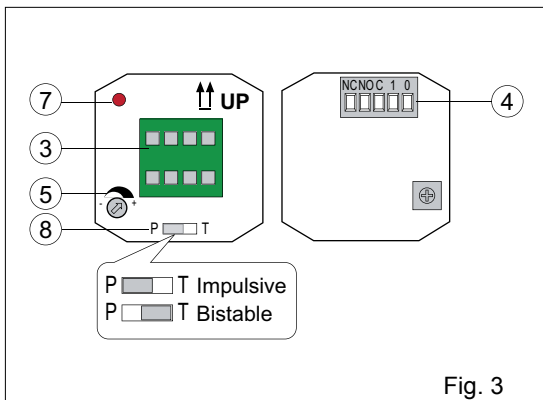


Fig. 3

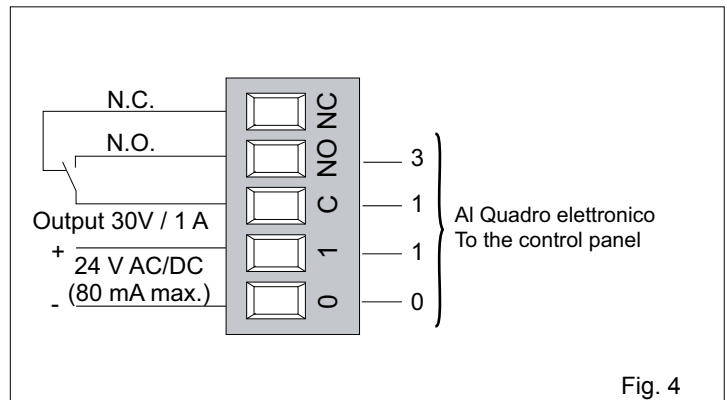


Fig. 4

IP2114  
Technical manual

## DECLARATION BY THE MANUFACTURER

Manufacturer: DITEC S.p.A.  
via Mons. Banfi, 3  
21042 Caronno Pertusella (VA) - ITALY.

Herewith declares that the microwave non-contact push button PID24 is in conformity with the provisions of the following EC directives:

- R&TTE Directive 1999/5/EC
- EMC Directive 2004/108/EC

Caronno Pertusella, 20-09-2011 Marco Zini  
(Managing Director)

## GENERAL SAFETY PRECAUTIONS


This installation manual is intended for professionally competent personnel only.

Read the instructions carefully before beginning to install the product. Incorrect installation may be a source of danger.

Packaging materials (plastic, polystyrene, etc.) must not be allowed to litter the environment and must be kept out of the reach of children for whom they may be a source of danger.

Before beginning the installation check that the product is in perfect condition.

For repairs or replacements of product only original spare parts must be used. These instruction must be kept and forwarded to all possible future user of the system.

 To handle electronic parts, wear earthed antistatic conductive bracelets.

## 1. TECHNICAL DATA

<b>Power supply</b>	24 V AC/DC
<b>Stand-by absorption</b>	50 mA
<b>Operating absorption</b>	80 mA
<b>Frequency</b>	24,150 GHz
<b>Output contact</b>	30 V / 1 A max (resistive load)
<b>Protection degree</b>	IP43
<b>Temperature</b>	da -20° C a +55° C

## 2. REFERENCE

- [1] Cover
- [2] Sensor support frame
- [3] Detection module
- [4] Command terminal board
- [5] Detection area range adjustment trimmer
- [6] Container
- [7] LED / Operating indicator
- [8] Detection mode selection switch

## 3. INSTALLATION AND ELECTRICAL CONNECTIONS

(Fig. 1) Fix the container [6] securely to a flat surface or place a round recessed box (not supplied) in a position suitable for the designated use and placed as shown in fig. 1 and 3. Make the connections to the command terminal board [4], as shown in Fig. 4.

**WARNING:** The product must be connected to an extra-low voltage power source (SELV = Safety Extra Low Voltage) which is protected from overcurrent and shortcircuiting.

Fasten the sensor support frame [2] to the container using the supplied screws.

**NB:** Avoid placing items that may move in the detection area i.e. curtains, signs or plants.

## 4. ADJUSTMENTS

### Selecting type of detection.

Select the type of detection using the selection switch [8].

T / TOGGLE: Toggle function.

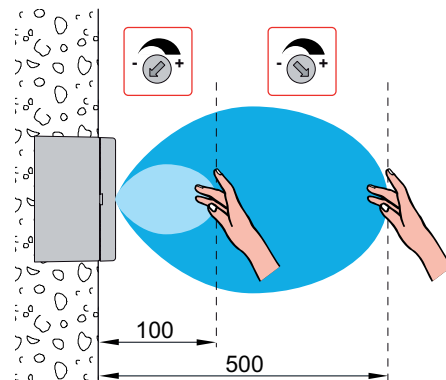
A first detection closes the contact which remains closed until a second detection takes place.

P / PULSE: Pulse function.

A detection activates the contact for a short period of time (approx. 1 s).

### Detection area adjustment

Adjust the detection area range by using the adjustment trimmer [5], as shown in the figure.



## 5. INDICATIONS

The LED [7] comes on when the output relay is activated.

## 6. TROUBLESHOOTING

Problem	Cause	Solution
It does not work	Power supply voltage	Check the power supply
	Faulty connection	Check the wiring and the connector
It does not always work	Sudden change in the detection area conditions	Check the installation conditions
		Check the detection area range.
It works by itself	There is an object in the detection area	Remove the object
	The sensor is subject to vibrations	Install the sensor firmly
	The sensor detects the moving door wing	Adjust the detection area correctly

### All right reserved

All data and specifications have been drawn up and checked with the greatest care. The manufacturer cannot however take any responsibility for eventual errors, omissions or incomplete data due to technical or illustrative purposes.